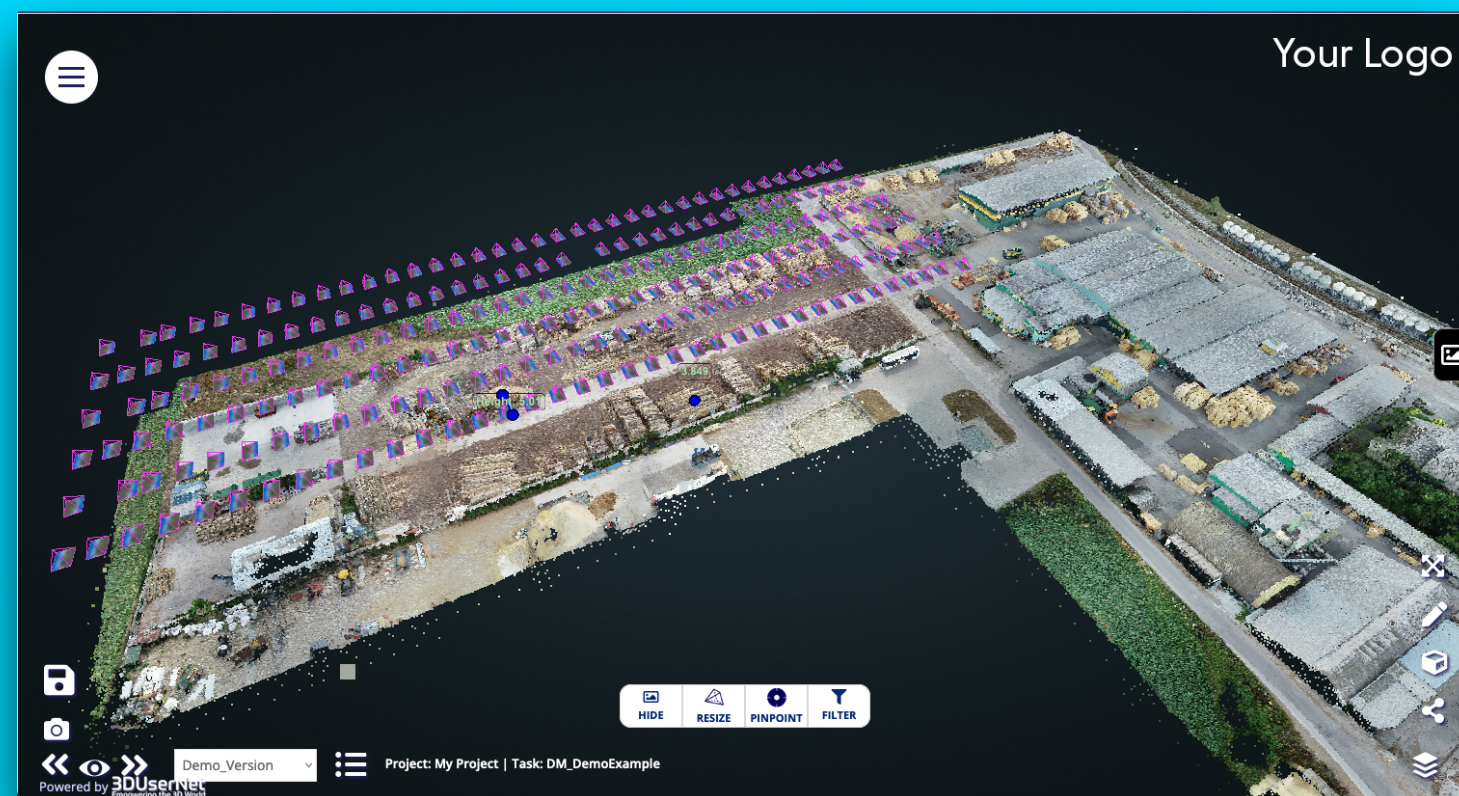


VISION Integrate

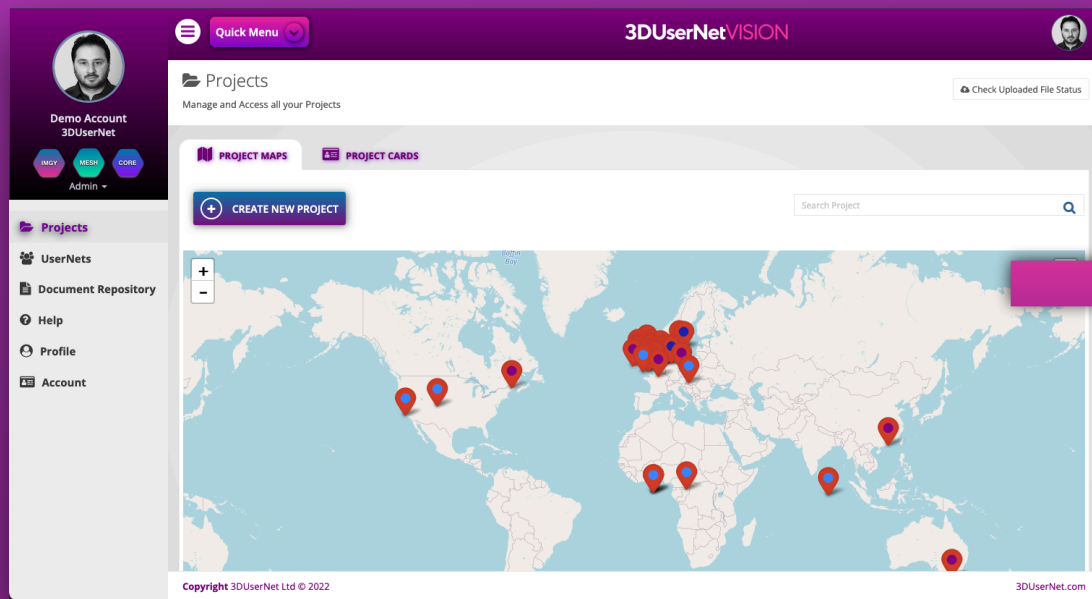
Simple Portal Integration

Company Portal



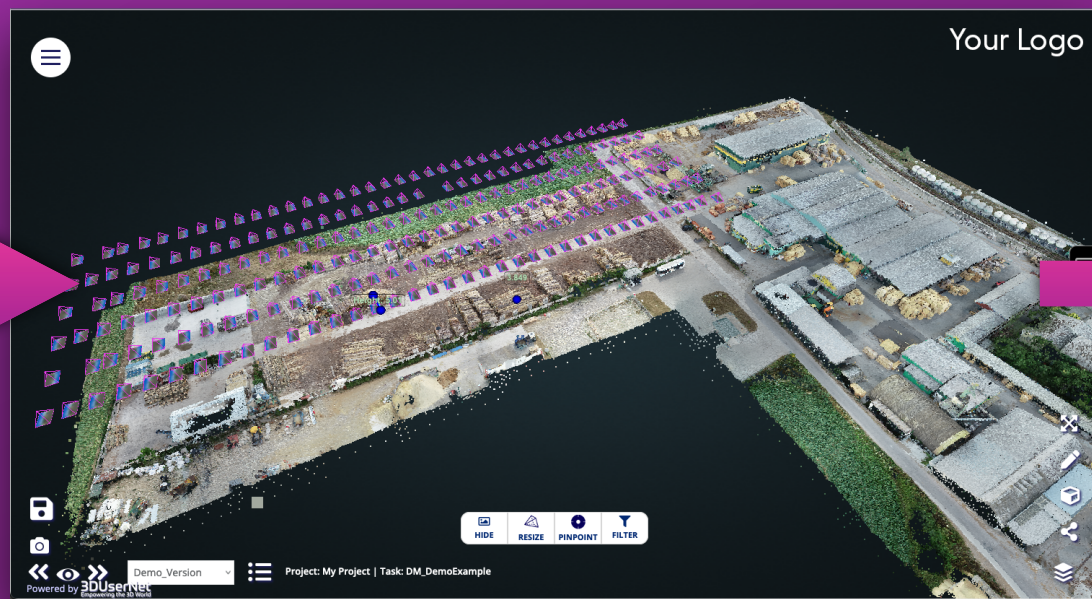
- Seamless Integration of 3D and Imagery Content with existing Company Portals
- White Labelling of 3D Views
- Broad 3D Toolset for End Users
- Uses existing Portal User Authentication
- Per Project Pricing Model

VISION Integrate | 4 easy steps to integration



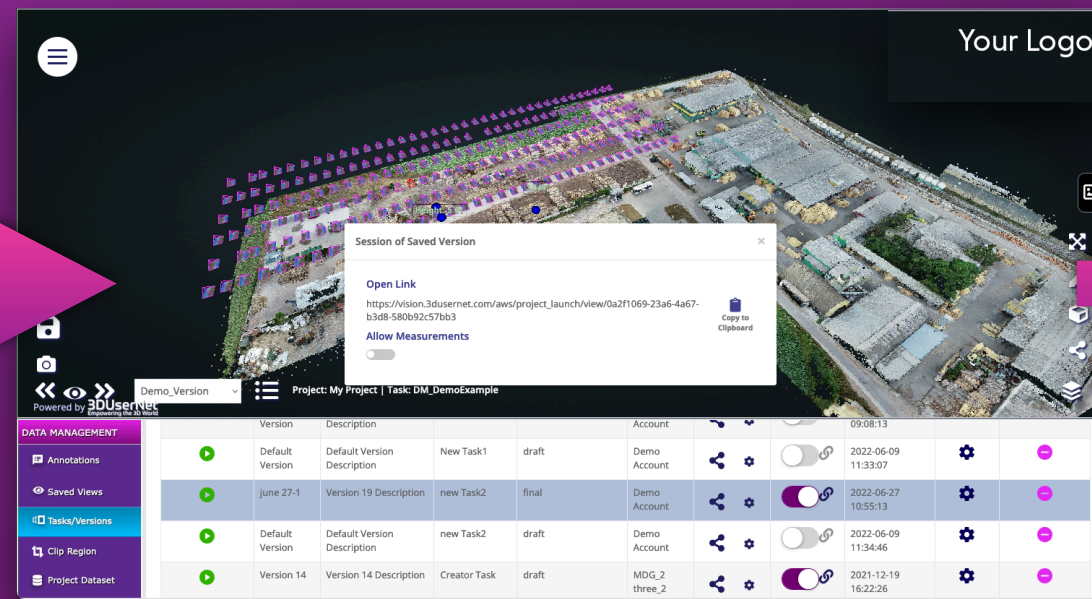
Step 1

Create a 3DUserNetVISION Account



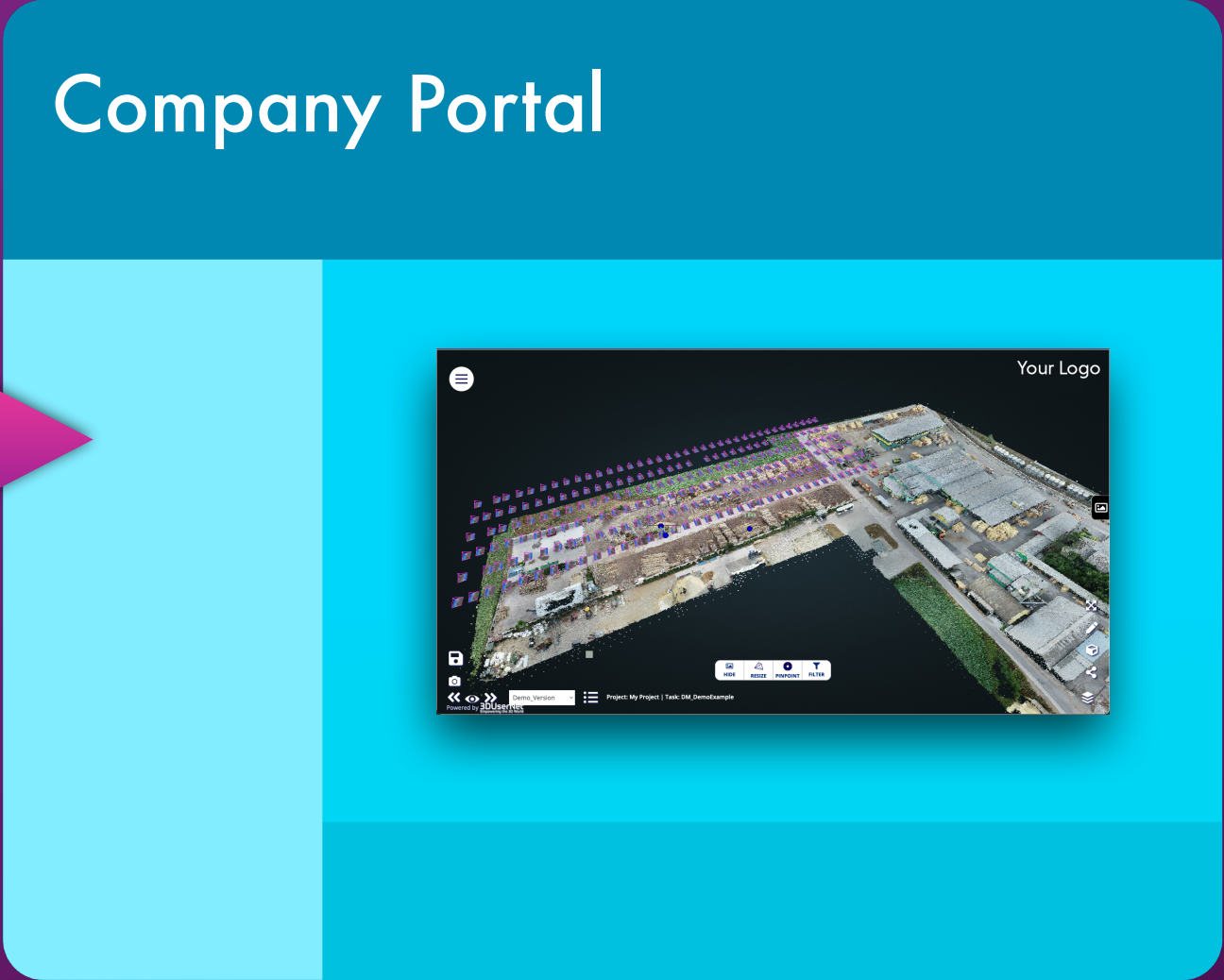
Step 2

Make a Project Version to show your data



Step 3

Generate the Share URL



Step 4

Integrate the URL into an iFrame on the host Portal

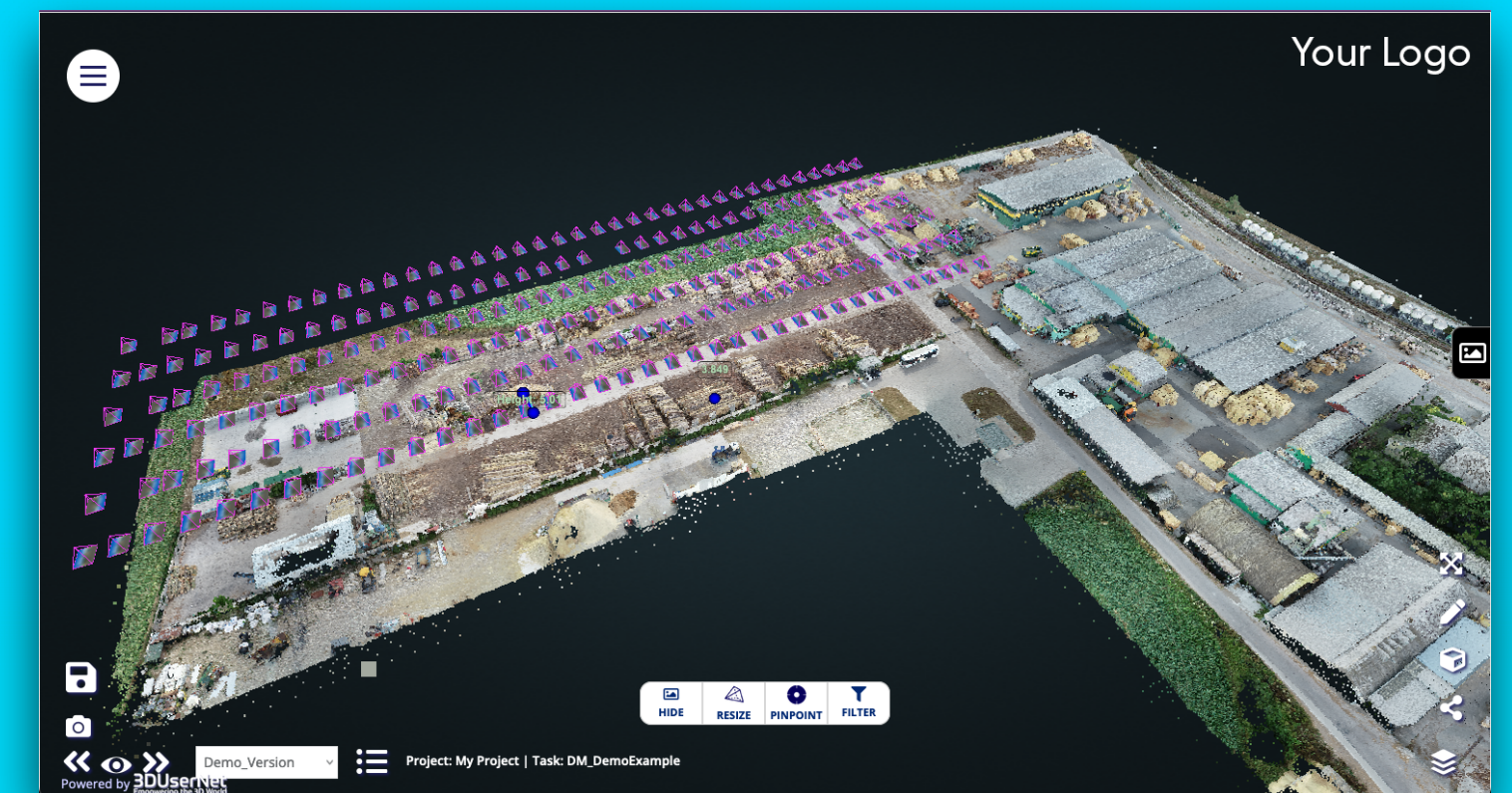
VISION Integrate | Creating the URL

- Create a Project and Task
- Upload some datasets
- Save a Version
- Enable Sharing for that Version and **choose** whether to allow measurement
- Copy the URL for the Share



- Full 3D Navigation
- 3D Measurement Suite for temporary measurement
- Temporary Annotations
- Download Snapshots
- Access to Shared Files (via Annotations)
- Viewing of all 2D / 3D Assets

Company Portal



VISION Integrate | Per Project Pricing

Project Data Size	Cost per Month
Up to 50 GB	£12
51 - 150 GB	£28
151 - 300 GB	£45
301 - 500 GB	£85
501 - 1000 GB	£165
1001 - 1500 GB	£245
1501 - 2000 GB	£270
2000 GB +	TBA

- Simple Banded Pricing
- Based on size of Uploaded datasets within a Project
- Paid Monthly
- Calculated on Maximum number of Projects within the Account that Month

3DUserNet VISION

Simple Portal Integration

spi@3dusernet.com